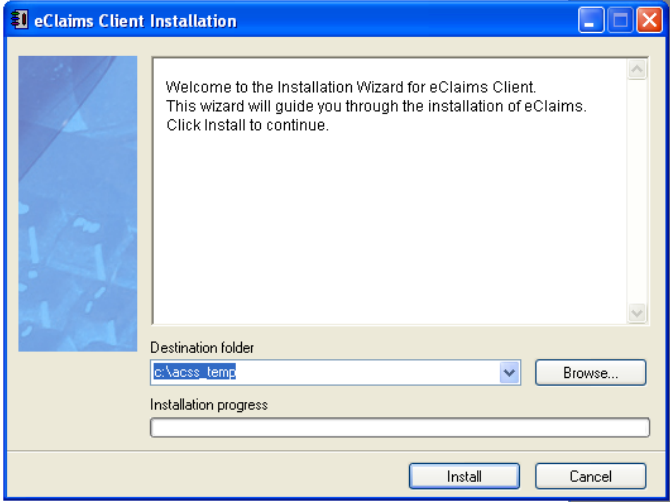
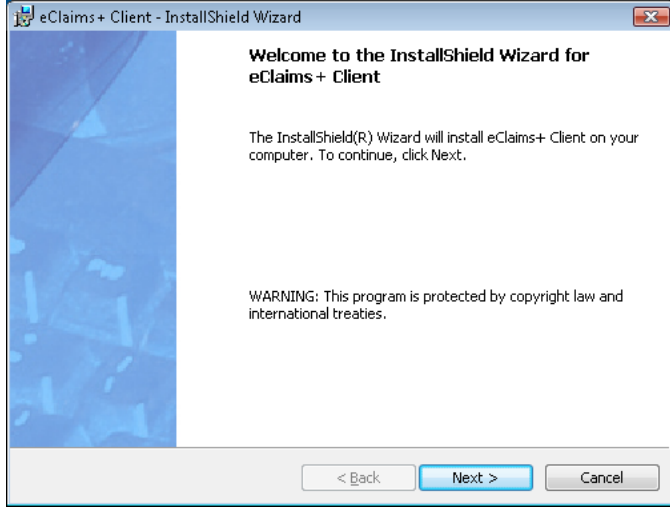


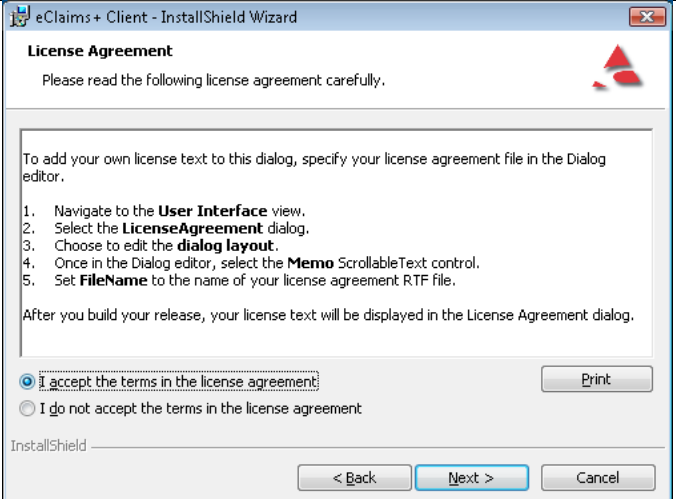
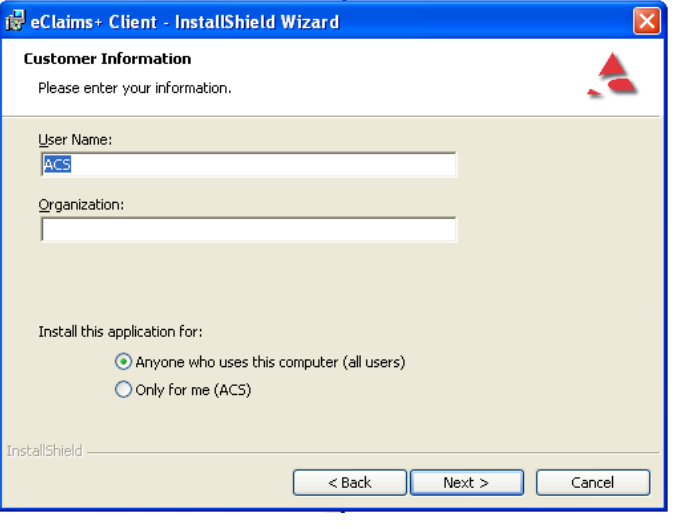
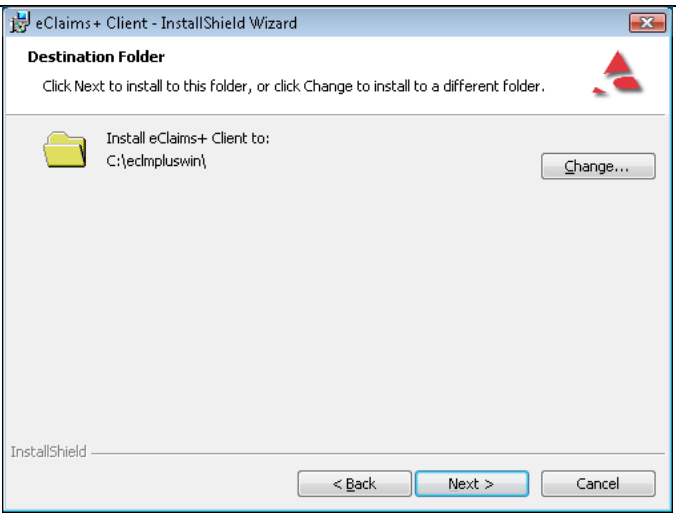
1. PREPARATION REQUIREMENTS

Before attempting the upgrade please ensure that you have the following:

- eClaims Installation disk which includes the eClaims Client installation file.
- Obtain the computer name of the machine in which the eClaims Server was installed on.
- Ensure you are logged into the computer with Administrator permissions.

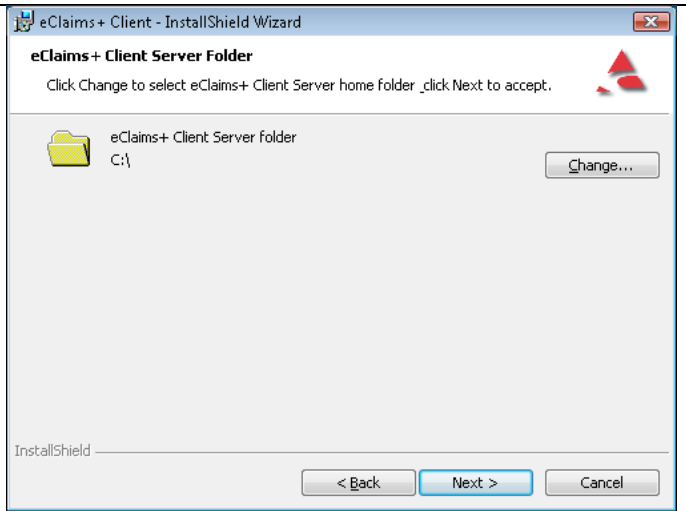
2. ECLAIMS CLIENT INSTALLATION

<p>Insert the installation CD provided into the computer.</p>	
<p>Click 'INSTALL'</p> <p>Note: Ensure the Destination folder is set to the local drive, eg. 'C:\'</p>	
<p>Click on 'NEXT'</p>	

<p>Select 'I accept the terms in the license agreement'</p> <p>Click on 'NEXT'</p>	
<p>Click on 'NEXT'</p> <hr/> <p>NOTE: If 'Anyone who uses this computer (all users)' is greyed out or not there at all, 'CANCEL' the installation and ensure you are logged in as a user with administrator privileges.</p>	
<p>Make sure the path is set to "C:\ECLMPLUSWIN"</p> <p>Note: To change the path, click on 'CHANGE' enter the path and click 'OK'</p> <p>Click on 'NEXT'</p>	

Specify the path of the machine in which eClaims Server is installed.

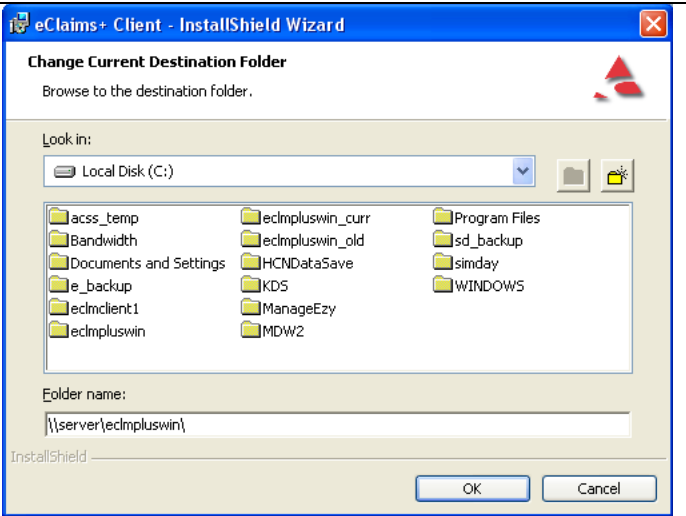
Click on 'CHANGE'



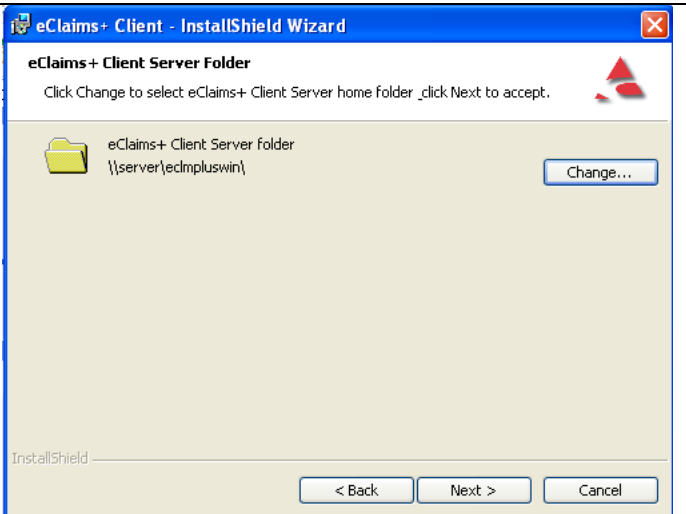
In the 'FOLDER NAME' field enter the path of the 'eclmpluswin' folder on the server.

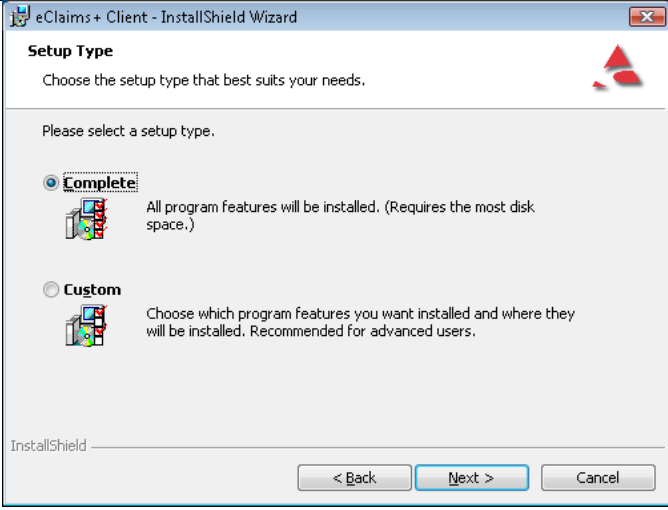
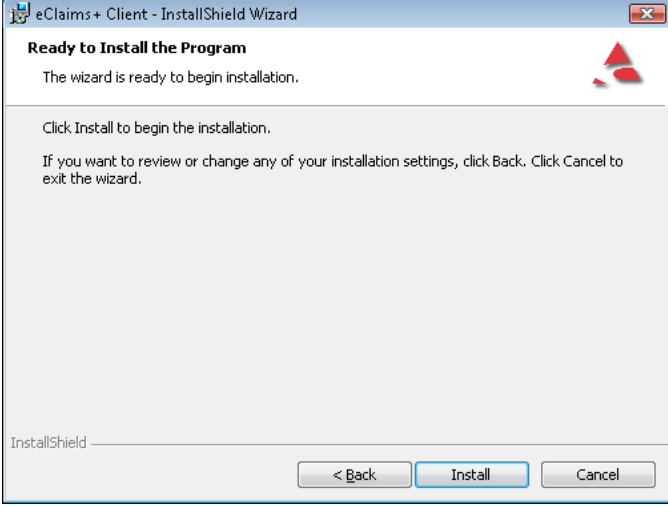
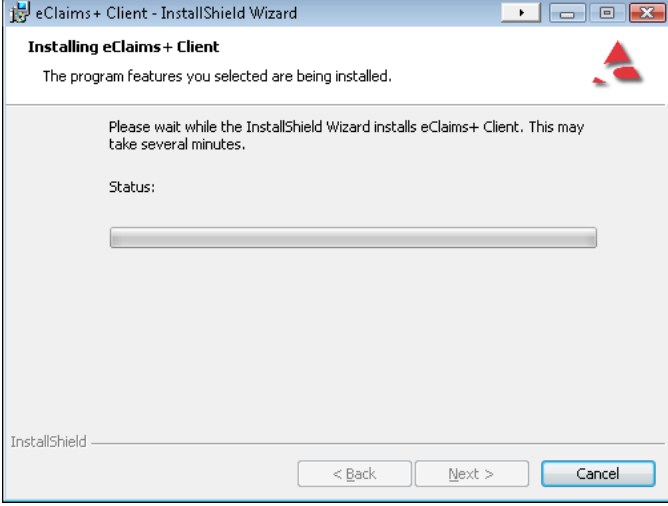
Eg. '\\server\eclmpluswin'

Click on 'OK'

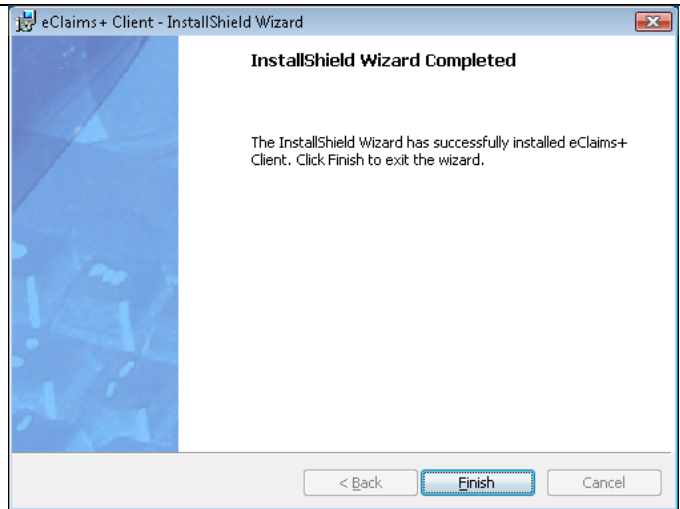


Click on 'NEXT'



<p>Click on 'COMPLETE'</p> <p>Click on 'NEXT'</p>	
<p>Click on 'INSTALL'</p>	
<p>The application will now be installed</p>	

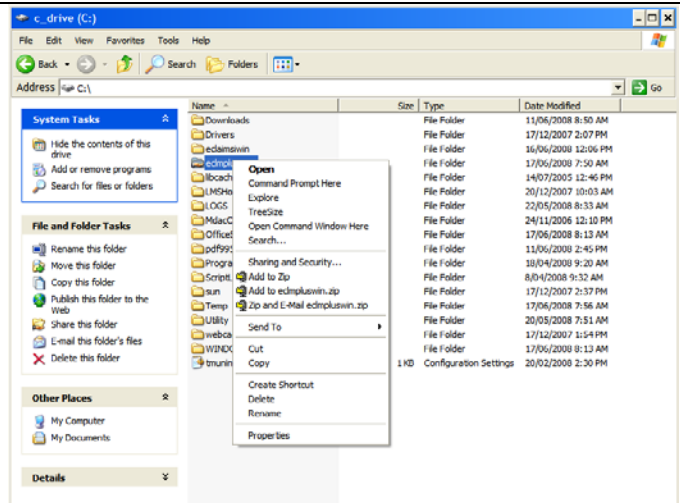
Click on 'FINISH'



Open 'MY COMPUTER'

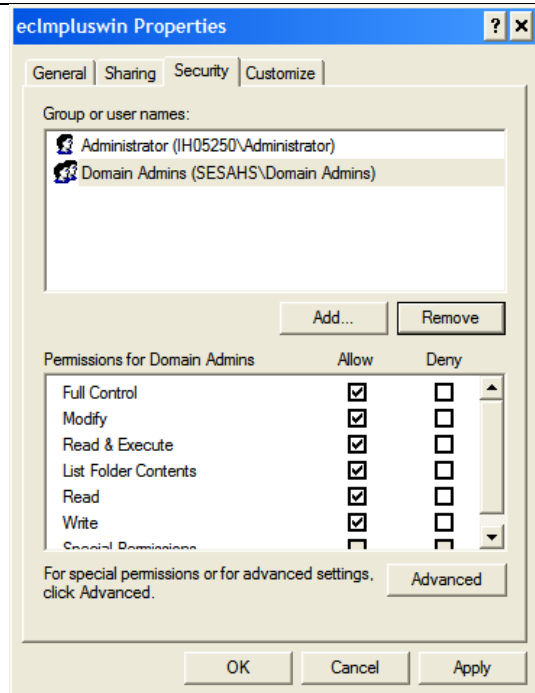
Open 'C:' Drive

Right click on the folder 'ECLMPLUSWIN' and select 'SHARING AND SECURITY'



Click on the 'SECURITY' tab.

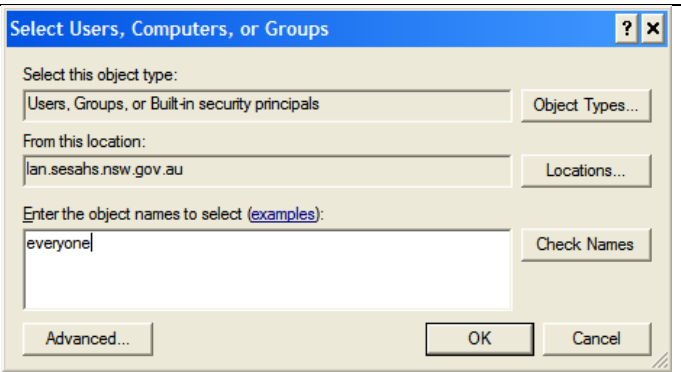
Click on 'ADD'



Type 'EVERYONE' in the 'Enter the object names to select' field.

Click 'CHECK NAMES' and the word 'EVERYONE' will be underlined.

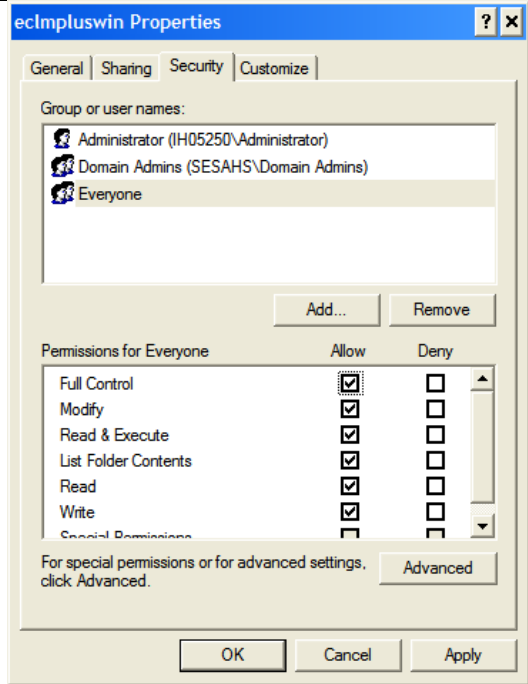
Click on 'OK'



Click on 'EVERYONE'

Tick the 'FULL CONTROL' option in the Allow column.

Click on 'OK'



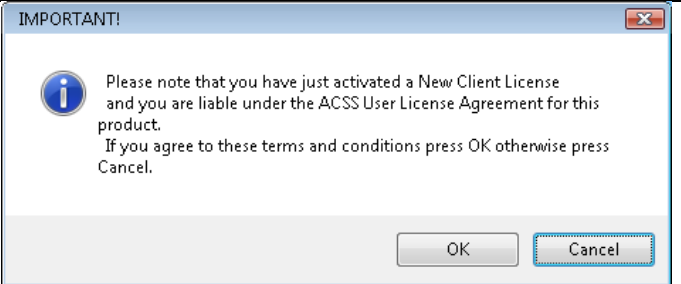
Run the shortcut 'eClaims + Client' application on the desktop.

The first time you run the application this screen will appear.

Click on 'OK'

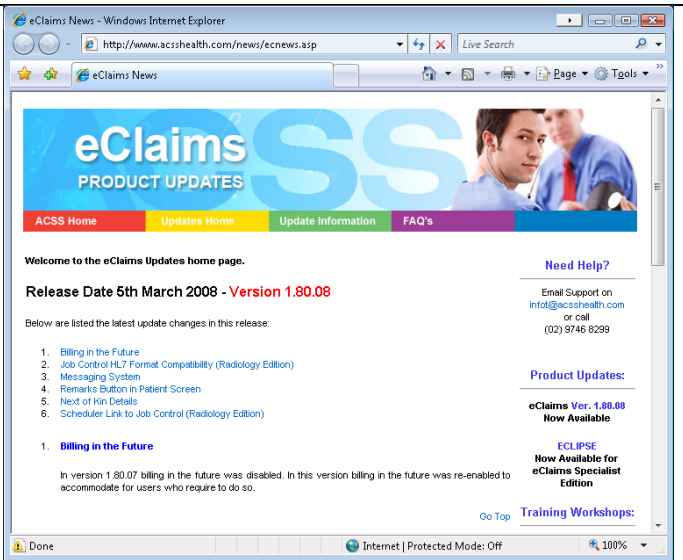
The application will close.

Run the shortcut 'eClaims + Client' application on the desktop again



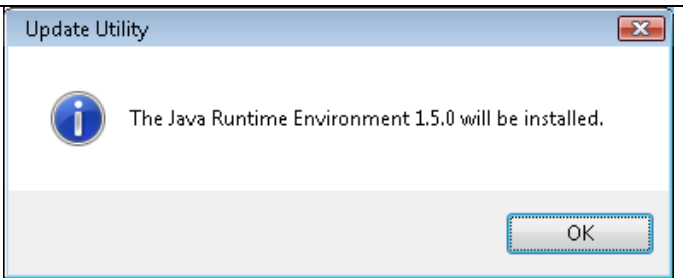
This internet link will open automatically showing details of the update.

Close this webpage.



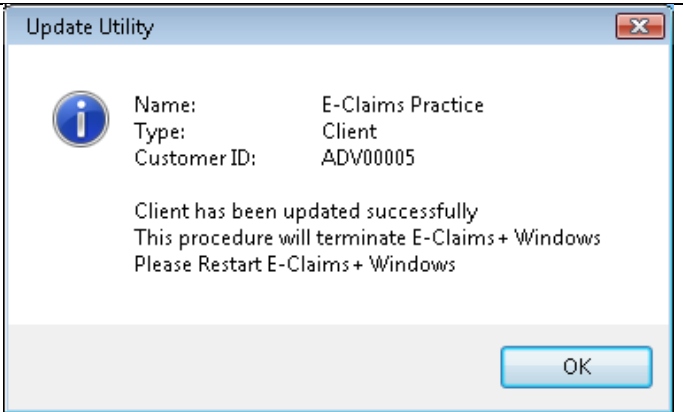
eClaims will automatically run through this process of updating the Java application.

Click on 'OK'



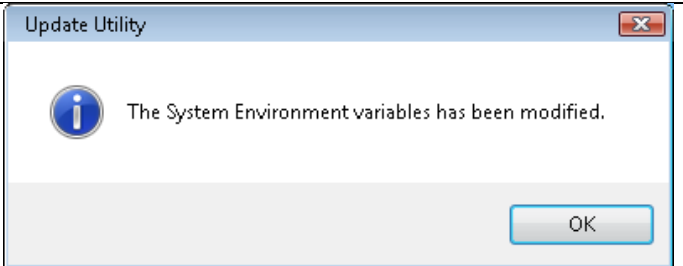
The application will automatically run through this process.

Click on 'OK'



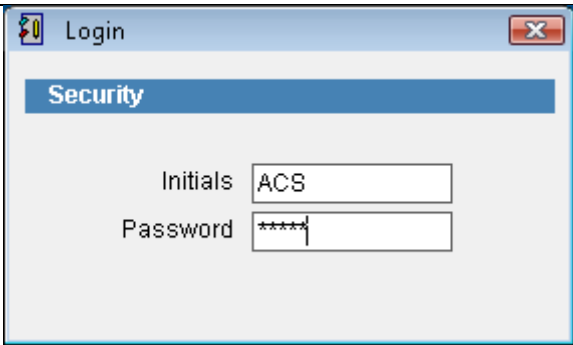
The application will automatically run through this process.

Click on 'OK'



Run 'eClaims + Client' from the desktop

Initials = ACS
Password = ADMIN



eClaims is now ready to use



3. SETTING UP PRINTERS

Follow the same steps as in the eClaims Server Installation guide to setup printers.